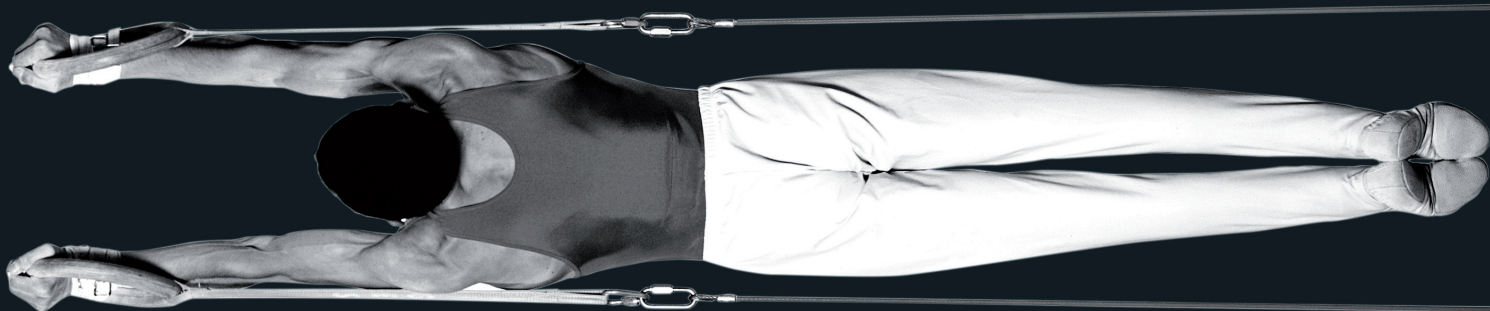


# *simons*



## **SIMONS: SHIP MONITORING SUITE**

**simons** is a ship monitoring system capable to detect and tracks ships by combining Earth Observation imaging and Cooperative streaming technologies. The suite is conceived as a background processing module that can be integrated / connected to higher level added-value systems / services. This modular vision extends to intra **simons** architecture where independent and highly efficient sub-modules are inter-linked. **simons** can work with any EO imagery and cooperative streams, and all the standard data formats are admitted. Outputs are provided by means of layers of information that are published through web services or an advanced GMV's visor called **socrates**®.

GMV  
[www.gmv.com](http://www.gmv.com)

f [www.facebook.com/infoGMV](https://www.facebook.com/infoGMV)  
t @infoGMV

**gmv**®  
INNOVATING SOLUTIONS

## FEATURES

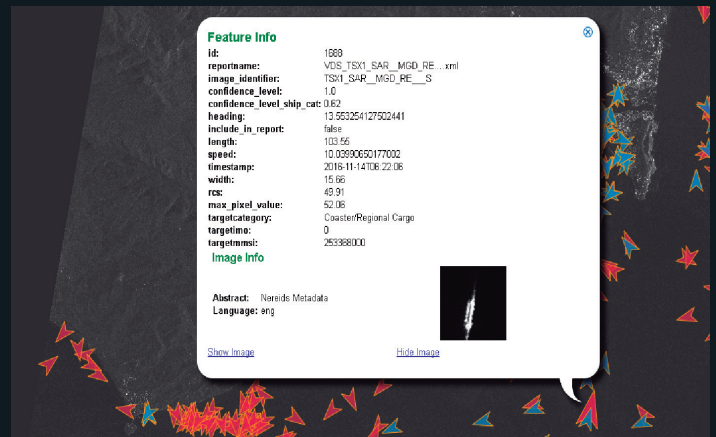
- Detection, categorization and tracking of ships
- Strategic Maritime picture
- Automatic & Modular Runtime

## INPUTS

- EO SAR and Optical imagery
- Cooperative streams (T-AIS, S-AIS, LRIT, VMS)

## PRODUCTS

- Real time picture
- EO-based ship analysis maps



## PERFORMANCE

Quality descriptor	Value
Processing Time	From 5 to 10 min depending on image size
Probability of Detection	> 95 % for ships with length > 4*image res.
Absolute Length accuracy	~75 %
Relative Length accuracy	~90 %
Categorization rate	~70 % for ships with length > 12*image res.
AIS Fusion	Yes → large range of formats admitted
Band & Area restrictions	No → any band, sensor and area can be processed

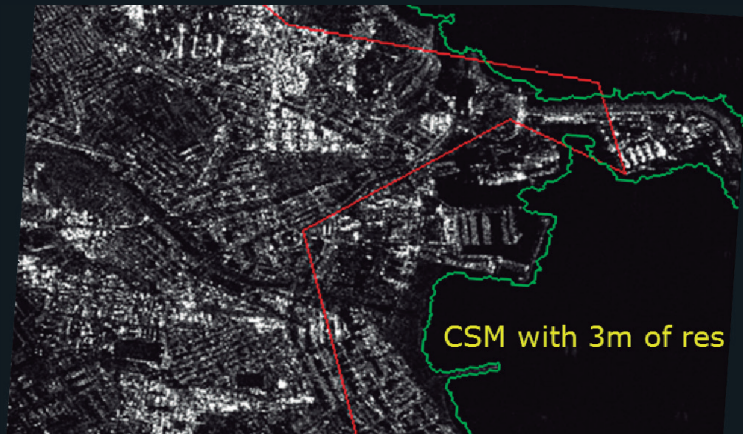
## OPERATIONAL CAMPAIGNS WITH GROUND-TRUTH



## Contact

Gerard Margarit: marketing.space@gmv.com, +34 91 807 2100

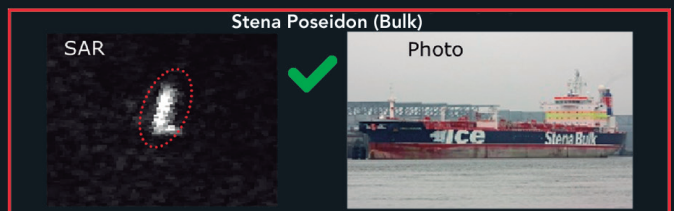
**COASTLINE DETECTION** → Wavelets + Geodesic Active contours; Only SAR



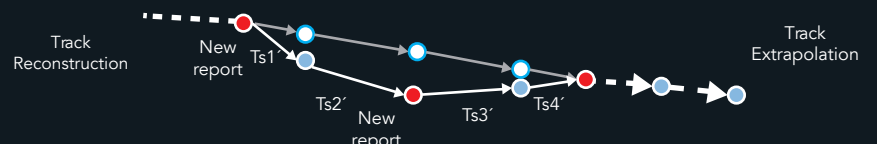
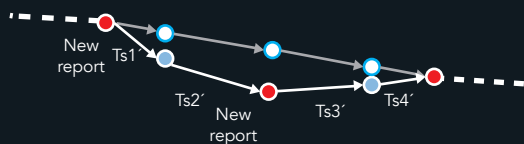
**SHIP DETECTION** → Wavelets; either SAR & Optical; confidence parameter



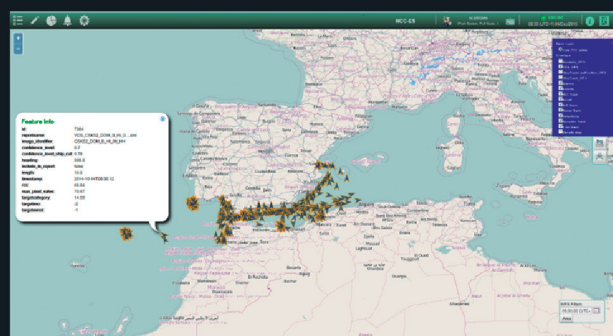
**SHIP CATEGORIZATION** → Fuzzy Logic; only SAR; 8 categories



**SHIP TRACKING** → Fuzzy Logic; AIS+VDS; different functions; 100 pos/s



**VISOR** → Feitner web services or own advanced visor SOCRATES©; connection with IMDATE at EMSA and EUROSUR at Frontex





**simons** has been successfully tested in a large range of operational campaigns with very diverse observational conditions and tracks of interest. In most of them, ground-truth has been available and **simons** performance has been accurately tested. Among them, specific relevant exercises worth mention due to the clear practical added-value that they provided, for instance the location of a small out-of-order boat with migrants whom health conditions were rapidly worsening or the location of a ship suspicious of conducting illegal fishing activities. Both cases served authorities to activate in-situ means that confirmed the information provided by **simons**.

