










DATA SHEET

Mission Environment Customizable	Highly flexible and configurable allowing the operator easy customization of the product to the mission.
Soft Planning Policy	Mission Algorithms based on rule files for generation, detection and resolution/optimization.
Schedule generation rate	Configurable and Automatable.
User-friendly GUI	Friendly and intuitive providing all Eclipse application features.
External Interfaces	Easy customization to mission needs. Quick extension for new input/output formats.
Supported Platforms	SLES 11 and Red Hat 6.
User Interface	Eclipse RCP application.
Architecture	Client/Server based on SOAP messages. SOA paradigm.
Input/output data formats supported	XML and ASCII.
Customers	Missions
        	EPSMPF(EUMETSAT/NOAA) LRO (NASA) SMOS (ESA) LDCM(NASA/USGS) Sentinel 1 (ESA) Sentinel 3(ESA/EUMETSAT) PAZ (INTA) SGSS (NASA) INGENIO (CDTI/ESA)

Other GMV products for satellite operations:

magnet **smart payload** 
focussuite **hifly**

For more information about **flexplan** please visit us online at:

<http://flexplan.gmv.com>

Email Us:
marketing.space@gmv.com

flexplan

A product by



Issac Newton, 11 P.T.M. Tres Cantos 28760
 Madrid SPAIN
www.gmv.com

 www.facebook.com/infoGMV
 @infoGMV

© GMV

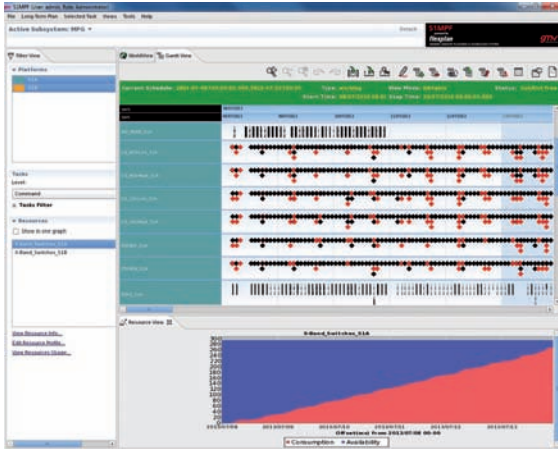
flexplan

COMPLETE SOLUTION FOR
GENERIC
MISSION PLANNING
AND SCHEDULING SYSTEM



WHAT IS flexplan ?

flexplan is a highly configurable and innovative Commercial Off-The-Shelf (COTS) Mission Planning and Scheduling (MPS) system.

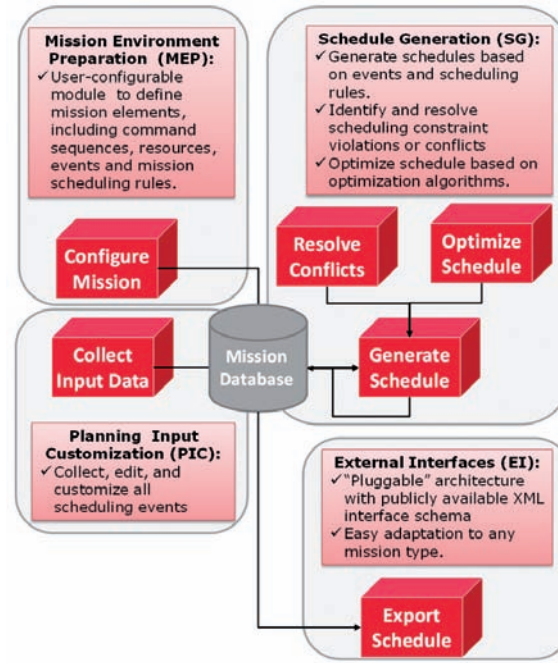


flexplan Schedule Generation Human-Machine Interface

flexplan PROVIDES

- **End-to-end mission planning and scheduling support** to a large variety of missions and users.
- Any source **planning input processing**, including fully integrated resource usage and availability processing.
- **Integrated schedule of non-conflicting tasks** generation, including planning for multiple entities (Ground and Space operations segments and manpower activities).
- **Flexible design** for a fast and easy mission customization, minimizing the integration effort with other ground segment systems.
- **External report generation for consistent schedule operations**, including executable spacecraft commands sequence of events and ground procedure pass scripts.
- **Manual and automatic generation** of schedules, including unmanned conflicts detection and resolution.
- **Configurable External Interfaces** (inputs/outputs), facilitating their integration and/or extension.
- **Service Oriented Client/Server Architecture** providing a SOAP web-services API.

flexplan PROCESS & CORE COMPONENTS



MULTI-MISSION, MULTI-CONSTELLATION, MULTI-PLATFORM, MULTI-USER

flexplan can be used for single missions, multi-missions and network scheduling.

flexplan can be configured for handling different user roles with different privilege levels to operate, monitor, filter and modify the schedule. The Graphical User Interface (GUI) is automatically adapted to user role and privileges.

DUAL SCHEDULE GENERATION MODE

The mission schedule can be generated from simple rules-based soft algorithms, complex code-based optimization algorithms, or both to maximize mission performance and schedule generation performance.

HIGH PERFORMANCE

Studies and benchmarking analysis show that **flexplan** can improve overall mission performance by 10% to 20%.

EASY TO USE, ADAPTABLE, SCALABLE

- No programming experience necessary.
- Soft algorithm generation makes system reusable from mission to mission. No need to recompile the data.
- Schedule monitoring is made easy with **flexplan**'s web based schedule visualization for the entire mission.

FULL LIFECYCLE SUPPORT

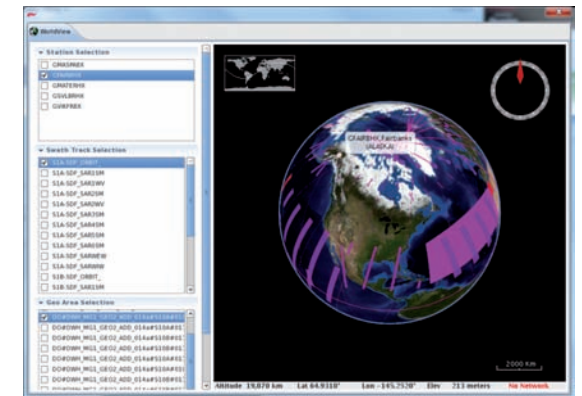
flexplan supports all off-the-shelf mission phases, including Launch, Testing, Operations and End-of-Life decommissioning.

MODULAR

flexplan's architecture is highly modular, allowing a wide variety deployment formats to provide the most optimal solution that enhances the scheduling experience and fits best the mission needs.

Additional schedule modules available include:

- TEG: Tailored Events Generation
- Scheduling Execution Monitor
- World Map Visualizer: 2D and 3D plan visualization
- Load Builder: CCSDS schedule generating component
- RQT: Report and Query Tool



flexplan 3D display of World Map Visualizer