

Scalable, hardware-agnostic platform for robot fleet management

uPathWay is a solution that orchestrates, manages, and optimizes heterogeneous fleets of robots and autonomous vehicles, enabling integrated operation in complex environments. It provides insights into vehicle status, performs data analysis, and ensures compliance with operational goals.

This platform streamlines the deployment and integration of autonomous robots, unifying their management in a single system, regardless of manufacturer or model. Its intuitive interface allows for device control, mission assignment and efficient monitoring of reports and statuses.

From asset inspection to last-mile transportation to precise application of crop protection products in the agricultural sector, **uPathWay** is the key to overcoming any challenge and taking industrial automation to the next level.

Main features

- **Precise navigation**
Our positioning system, based on **GMV GSharp®** and requiring no additional infrastructure, allows the robot to follow the predefined route with great precision.
- **Operational efficiency and cost savings**
It automates repetitive tasks and those that may pose a risk to employees, reducing errors and improving accuracy. It also minimizes human intervention in routine processes, reducing costs
- **Scalability**
The platform is highly scalable, allowing for the integration of more robots and vehicles as the company's needs grow.

What is it used for?

- **Comprehensive robot and vehicle management**
Centralizes the management of mobile robots and autonomous vehicles, enabling unified management regardless of manufacturer or model. Facilitates oversight, mission planning, and device monitoring from a single platform.
- **Real-time monitoring and analysis**
Monitoring assets on an ongoing basis, collecting and analyzing data in real time to ensure optimal robot and vehicle performance. This includes monitoring statuses, reports, and key metrics to improve operational efficiency.
- **Simplified deployment and integration**
Facilitates the implementation and integration of robots and autonomous vehicles in industrial environments. Its manufacturer-agnostic approach ensures interoperability and allows operations to be scaled efficiently.



AI-POWERED PLATFORM FOR YOUR ROBOTS AND VEHICLES



Hardware-agnostic

Compatible with any type of mobile platform, regardless of robot manufacturer or model, ensuring seamless integration and maximum flexibility.



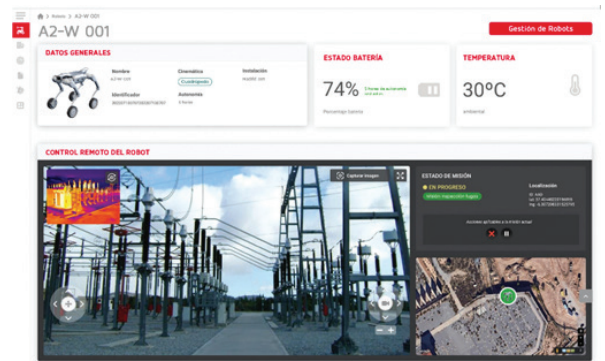
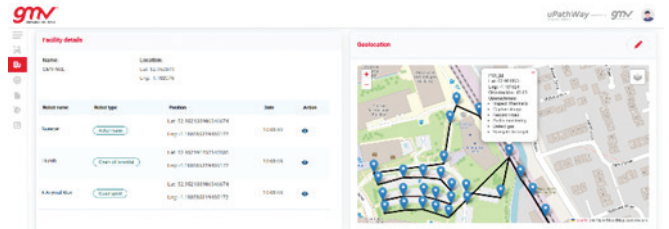
AI-powered

Enables route optimization, advanced sensing, and modular autonomous inspection for greater efficiency and adaptability.



Easy to use

Manage robots, missions, routes, and reports through a simple and intuitive web interface, with no prior mapping required.



Who is it for?

- **Manufacturing**
Companies looking to implement robots for assembly, inspection, and maintenance tasks.
- **Energy and Utilities**
Use of autonomous mobile robots for inspecting infrastructure such as power plants and distribution networks.
- **Logistics and Mobility**
Automation of inventory management and internal logistics with autonomous mobile robots capable of operating outdoors.
- **Other sectors?**
Tell us your goal and we'll make it happen.

