

## Robot-agnostic AI-based platform designed to optimize autonomous mobility in industrial environments

**uPathWay** is a comprehensive solution designed to optimize the management of mobile robots and autonomous vehicles in industrial environments. It provides insights into your robots, performs data analysis, and ensures the achievement of operational objectives.

This platform simplifies the deployment and integration of autonomous robots, consolidating their management into a single system, regardless of manufacturer or model. With an intuitive interface, it enables device control, mission assignment, and efficient monitoring of reports and statuses.

From asset inspection to last-mile transportation and precision spraying, **uPathWay** is the key to overcoming any challenge and taking industrial automation to the next level.

### Key Features

- **Precise Navigation**  
Our positioning system, based on GPS without requiring additional infrastructure, allows the robot to follow the predefined path with high precision.
- **Operational Efficiency and Cost Savings**  
Automates repetitive tasks or those that may pose a risk to employees, reducing errors and improving accuracy. It also minimizes the need for human intervention in routine processes, lowering operational costs.
- **Scalability**  
The platform is highly scalable, allowing the integration of more robots and vehicles as the company's needs grow.

### What is it used for?

- **Comprehensive Management of Robots and Autonomous Vehicles**  
Centralizes the administration of mobile robots and autonomous vehicles, enabling unified management regardless of the manufacturer or model. Facilitates control, mission planning, and device monitoring from a single platform.
- **Real-Time Monitoring and Analysis**  
Provides continuous asset tracking, collecting and analyzing real-time data to ensure optimal robot and vehicle performance. This includes monitoring statuses, reports, and key metrics to enhance operational efficiency.
- **Simplified Deployment and Integration**  
Facilitates the implementation and integration of robots and autonomous vehicles in industrial environments. Its manufacturer-agnostic approach ensures interoperability and allows businesses to scale operations efficiently.



# AI-POWERED PLATFORM FOR YOUR ROBOTS AND VEHICLES



## Intuitive to Use

Simplifies route definition with GNSS-corrected data. Provides a unified and accessible platform to manage robots, facilities, reports, alarms, etc.



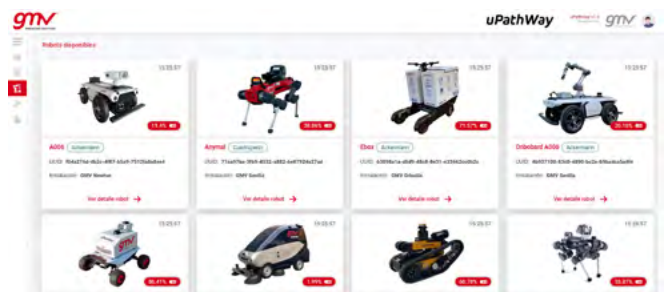
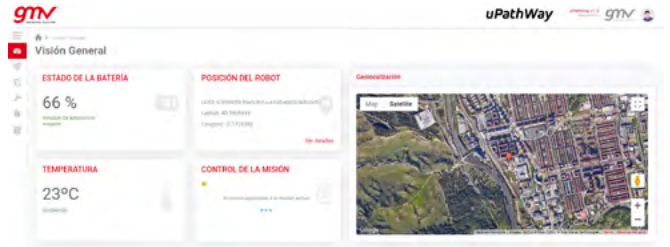
## Hardware-agnostic

Compatible with any type of mobile platform, regardless of the manufacturer or robot model (including ATEX vehicles), ensuring seamless integration and flexibility.



## Expandable

Integration with AI models and external systems. Additionally, a Marketplace is available to add new functionalities such as inspection, spraying, delivery, etc.



## Who is it for?

- Manufacturing:**  
 Companies looking to implement robots for assembly, inspection, and maintenance tasks.
- Energy and Public Services:**  
 Use of autonomous mobile robots for the inspection of infrastructures such as power plants and distribution networks.
- Logistics and Mobility:**  
 Automation of inventory management and internal logistics with autonomous mobile robots capable of operating outdoors.
- Other Sectors?**  
 Tell us your challenge, and we will make it a reality.

